

# KACE Asset Management for Federal Agencies

Meet compliance requirements with full software and hardware asset management

Recent mandates have increased the urgency for federal agencies to more closely control spending throughout the entire software asset management (SAM) and licensing process. While you might already have native tools in place, their complexity and inability to easily deliver needed information quickly can hamper SAM efforts and cut into your ability to meet mandated deadlines.

Unlike native tools, the Quest® KACE Systems Management Appliance (SMA) provides comprehensive, flexible software and hardware asset management capabilities across a variety of platforms, including Windows®, Mac®, Linux and UNIX®, as well as any device with an IP address, including printers and network devices. This ensures needed controls throughout your entire IT asset management (ITAM) lifecycle.

In addition, the KACE SMA helps you play a strategic role in support of Federal Information Technology Acquisition Reform Act (FITARA) Section 837 and Category Management Policy 16-1, an

initiative supporting cost controls and the alignment of software contracts and purchases with actual consumption. The KACE Systems Management Appliance helps you implement mature SAM processes and deliver trustworthy compliance data to ensure your agency meets policy deadlines.

## FEATURES

**Discovery and inventory** — Discover and inventory all the devices on your network, including installed software on laptops, desktops, servers, tablets, storage devices and network-connected non-computer devices.

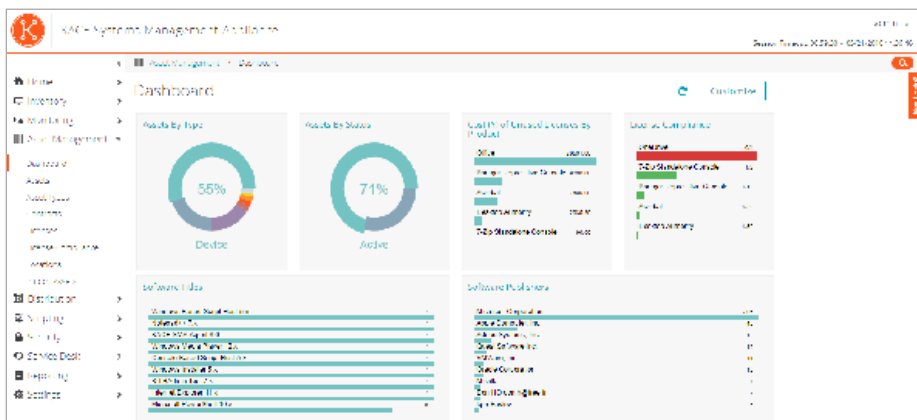
**Software license compliance** — Save your organization money through pragmatic SAM (including the avoidance of audits and fines), as well as optimized utilization of purchased licenses.

**Standard and customized reporting** — Confirm proof of compliance via wizard-based reporting, allowing for the creation of both pre-configured and customized reports.

The KACE Systems Management Appliance helps you meet software compliance requirements as set forth by FITARA Section 837 and Category Management Policy 16-1.

## BENEFITS:

- Accurate software and hardware inventory for all network-connected devices
- Better visibility to software usage to avoid audit-related fines or license overpayment
- Full reporting for software and hardware inventory and proof of compliance
- Direct access to a software catalog for identification and normalization
- Efficient control of the entire asset lifecycle, from acquisition to disposal
- Added control for hardware refresh cycles, including knowledge of warranties and improved vendor management



The KACE Systems Management Appliance provides a clear view of all software assets in use, and delivers full SAM lifecycle capabilities designed for federal agencies.

## SYSTEM REQUIREMENTS

### SUPPORTED PLATFORMS

**Windows® 8, Windows 8.1, Windows 10**  
Professional, Enterprise

**Windows 7**  
Professional, Enterprise, Ultimate

**Windows Server® 2012, Windows Server 2012 R2, Windows Server 2016**  
Foundation, Essentials, Standard\*, Datacenter\*

**Windows Server 2008, Windows Server 2008 R2**  
Web Edition, Standard Edition, Enterprise Edition, Datacenter Edition, HPC Edition

**Mac OS X®**  
10.10 (Intel only)–10.11

**Red Hat® Enterprise Linux®, Linux AS and ES**  
Versions 6.x–7.x 32-bit and 64-bit architecture

**SUSE® Linux Enterprise Server**  
Version 11-12, 32-bit and 64-bit architecture

**Ubuntu®**  
Versions 16.x-17.x, 32-bit and 64-bit architecture

Name	Publisher	Installed	Licenses	Variance	Total \$	Status \$	Max Used Qty	Not Used Lic Qty	Publisher
Office	Microsoft Corporation	1	23	20	22,575.00	1	0	0	Microsoft Corporation
Microsoft Office 2010 Professional Plus	Microsoft Corporation	1	33	90	7,575.00	1	0	0	Microsoft Corporation
Windows 7 Professional	Microsoft Corporation	1	41	40	1,630.00	1	0	0	Microsoft Corporation
Windows 7 Enterprise	Microsoft Corporation	1	33	10	7,000.00	1	0	0	Microsoft Corporation
Windows Server 2012 R2 Datacenter	Microsoft Corporation	1	3	9	9,000.00	1	0	0	Microsoft Corporation
Windows Server 2012 R2 Standard	Microsoft Corporation	1	4	1	4,000.00	1	0	0	Microsoft Corporation
Windows Server 2012 R2 Standard	Microsoft Corporation	1	5	1	5,000.00	1	0	0	Microsoft Corporation
Windows Server 2012 R2 Standard	Microsoft Corporation	1	3	1	3,000.00	1	0	0	Microsoft Corporation
Windows Server 2012 R2 Standard	Microsoft Corporation	1	3	1	3,000.00	1	0	0	Microsoft Corporation
Windows Server 2012 R2 Standard	Microsoft Corporation	1	3	1	3,000.00	1	0	0	Microsoft Corporation

Gain control over software licensing utilization and costs with KACE SMA by properly metering usage and preparing for potential audits in the event of over-utilization.

**Software metering** — Conserve funds by tracking usage and uninstalling unused software and then transferring licenses to users who need them, or removing unneeded licenses from your next vendor purchase agreement.

**Application catalog** — Ensure simplified software license auditing, compliance and control with the Quest application catalog, which provides information on application version and name variations, as well as publisher names, suite recognition and categorization of applications.

**Digital asset management** — Automate asset management from deployment to retirement, including asset data audits, tracking, compliance and reconciliation. The KACE Systems Management Appliance's functionality includes common asset fields and software license types, as well as out-of-the-box support for storing asset associations, ensuring accurate tracking of financial and service impacts of asset changes.

**KACE GO Mobile App** — Access the KACE SMA solution from mobile devices, enabling you to remain effective even when you're away from a computer.

**One-click system upgrades** — Perform all system component upgrades, from database to user interface, via a single click, avoiding risky and costly solution migrations.

**Fast implementation and online training** — Enjoy fast implementation via the KACE SMA's all-in-one form factor, intuitive tab-based user interface, and staff training provided online and on-site in hours, not weeks.

### ABOUT QUEST SOFTWARE

Quest Software creates technology and solutions that build the foundation for enterprise AI. Focused on data management and governance, cybersecurity and platform modernization, Quest helps organizations address their most pressing challenges and make the promise of AI a reality. Around the globe, more than 45,000 companies including over 90% of the Fortune 500 count on Quest Software. For more information, visit [www.quest.com](http://www.quest.com) or follow Quest Software on X (formerly Twitter) and LinkedIn.

\*Cannot be running in Server Core mode.

For more specifications, see the operating system vendor's documentation. The appliance imposes no additional requirements, and supports 32-bit and 64-bit architectures where applicable.

Quest  
4 Polaris Way, Aliso Viejo, CA 92656 | [www.quest.com](http://www.quest.com)  
If you are located outside North America, you can find local office information on our Web site.

Quest, KACE and the Quest logo are trademarks and registered trademarks of Quest Software Inc. For a complete list of Quest marks, visit [www.quest.com/legal/trademark-information.aspx](http://www.quest.com/legal/trademark-information.aspx). All other trademarks are property of their respective owners.

© 2025 Quest Software Inc. ALL RIGHTS RESERVED.

DataSheet-KACE4Feds-US-KS-34292

